



**Electronic forms as an efficient
eGovernment tool**

Agenda

- What are intelligent electronic forms
- Technology
- CzechPOINT
- Given Hand

What are intelligent electronic forms?



Files



- Everyone knows how to **download** a file

- Everyone knows how to **open** it



- Everyone knows how to **click** a **button**

- Everyone knows how to **save** a file



1:1 converted papers

- Pixel precise
- Page-oriented
- User knows what to do with paper -> knows what to do with a form
- Always printable
- Convert2PDF



Jedno z polí a) nebo b) musí být vybráno.

Zvolte podporovanou aktivitu, na kterou je Váš projekt zaměřen. O podporu pod písm. b) a c) může žádat pouze MSP. Podpory pod písmeny b) a c) mají doplňkový charakter k podpoře pod písm. a), tj. nelze o ně žádat samostatně.



Registrační žádost

Základní údaje

Název (pod)programu
Název projektu
Podporovaná aktivita v rámci programu

Potenciál

- a) Podpora zavedení kapacit pro průmyslový výzkum, vývoj a inovace
- b) Podpora rozšíření kapacit pro průmyslový výzkum, vývoj a inovace
- c) Podpora provozních nákladů centra pro průmyslový výzkum, vývoj a inovace
- d) Podpora vybraných nákladů na poradenské služby centra pro průmyslový výzkum, vývoj a inovace.

Základní údaje o žadateli

1. Žadatel

Chcete-li přidat mateřskou společnost, klepněte na tlačítko + / x vpravo

Právní forma

Velikost podniku podle nařízení komise č. 70/2001
Podniká žadatel kratší dobu než 2 uzavřená účetní období?

Žadatel je plátcem DPH

Hlavní oblast podnikání dle OKEČ

Vedlejší oblast podnikání (Řádek přidejte / odeberte tlačítkem + / x vpravo)

Název
-klepnutím vyberte ze seznamu-

Sídlo žadatele

Ulice	<input type="text"/>	Č. p.	<input type="text"/>	Č. or.	<input type="text"/>	PSČ	<input type="text"/>	(např. 11800)
Obec	<input type="text"/>	ORP	<input type="text"/>					
Okres	<input type="text"/>	Kraj	<input type="text"/>					



Your companion in filling out

- dynamic behaviour (switch and repeating sections)
- Contextual help
- Form controls – fields, buttons, radiobuttons, checkboxes, date input and others
- General help
- Compulsory fields, restrictions, calculations, logic

RZ_POTENCIAL_260607_ostra.fo - 602XML Filler

File Edit View Data Tools Help

602XML Filler 2 602

Fill Out Help

CZECHINVEST Registrační žádost

Základní údaje

Název (pod)programu

Název projektu

Podporovaná aktivita v rámci programu

Highlighted compulsory fields

Potenciál

- a) Podpora zavedení kapacit pro průmyslový výzkum, vývoj a inovace
- b) Podpora rozšíření kapacit pro průmyslový výzkum, vývoj a inovace
- c) Podpora provozních nákladů centra pro průmyslový výzkum, vývoj a inovace
- d) Podpora vybraných nákladů na poradenské služby centra pro průmyslový výzkum, vývoj a inovace.

Základní údaje

1. Žadatel

Právní forma

Velikost podniku podle nařízení komise č. 70/2001

Podniká žadatel kratší dobu než 12 měsíců? účetní období?

Listboxes

Hlavní oblast podnikání dle OKEČ

Vedlejší oblast podnikání (Řádek přidejte / odeberte tlačítkem + / x v pravo)

Název

-klepnutím vyberte ze seznamu-

Repeating sections

Sídlo žadatele

Ulice

Obec

Okres

Č. p. ORP

Kraj

Č. or.

PSC

(např. 11800)

Chcete-li přidat mateřskou společnost, klepněte na tlačítko + / x vpravo

Žadatel je plá

Help in filling out

Jedno z polí a) nebo b) musí být vybráno.

Zvolte podporovanou aktivitu, na kterou je Váš projekt zaměřen. O podporu pod písm. b) a c) může žádat pouze MSP. Podpory pod písmeny b) a c) mají dopřikový charakter k podpoře pod písm. a), tj. nelze o ně žádat samostatně.

Easy way to safe communication

- One click signing
- PKCS#7, X509
- Qualified, commercial, internal
- Integrity and validity of data ensured (even attachments)
- Server connection secured
- Encryption
- Smart cards and tokens supported



http://en.wikipedia.org/wiki/Digital_signatures_and_law

http://en.wikipedia.org/wiki/Digital_signature

Article 5 – [Directive 1999/93/EC of the European Parliament and of the Council](#)

Legal effects of electronic signatures

1. Member States shall ensure that advanced electronic signatures which are based on a qualified certificate and which are created by a secure-signature-creation device:
 - (a) satisfy the legal requirements of a signature in relation to data in electronic form in the same manner as a handwritten signature satisfies those requirements in relation to paper-based data; and
 - (b) are admissible as evidence in legal proceedings.
2. Member States shall ensure that an electronic signature is not denied legal effectiveness and admissibility as evidence in legal proceedings solely on the grounds that it is:
 - in electronic form, or
 - not based upon a qualified certificate, or
 - not based upon a qualified certificate issued by an accredited certification-service-provider, or
 - not created by a secure signature-creation device.



Technology

MS Excel

- Limited control
- Difficult to update form and code lists
- Stand alone application, **process flow is not implemented**
- Data extraction from the form is costly

Web form application

- Verification of data after the form is submitted
- The form must be filled in at one time (real time)
- WEB application is quite expensive, **process flow is hardly customizable**
- Usually don't support standard user interface,
- **not useful for integration**

602XML Form

- Verification of input data during filling out
- Possibility to fill in the form without access to the Internet
- Large set of controls, calculations, restrictions
- **Simply to implement, simply to customize**
- Support Data Flow
- Xforms, XML, XSLT, Digital signatures

- **602XML Filler**

- Application for filling out forms
- Displays intelligence of the form and works with it
- **Freeware**

- **602XML Form Server**

- Form management system
- Business process control and management
- **Collect, manage and flow**

- **602XML Designer**

- Fully formatted document development, understandable by any XSL-FO validator and parser
- Part of 602XML Form Publishing
- **Freedom**

602XML Designer

Form design
Form authentication
Form publishing



602XML Filler

Offline filling
Digital signature
Send via HTTP or via e-mail
Print and export to PDF



602XML Form Server/IS

Manage and flow
Save in database
Connectable to various
information systems



- **XML is a standard**
 - connection and interlacing of 602XML Forms with any information system is easy and independent on used database
- **Forms can be filled by data from any information system**
- **Listboxes and fields can be on-line connected to IS**
- **It is possible to send and receive data to/from multiple sources at one time by joining several submit profiles into one**

Data model:

- Data are separated from formatting
- XForms Standard
- External listboxes, upload from database or xml file
- Data can be (sent or uploaded to form) bound to CACHE DB

Form formatting:

- XSL-FO standard (page-oriented formatting)

Electronic signature:

- XML signature (W3C)
- PKCS#7 (RFC 2315)

Calculations and logical structure

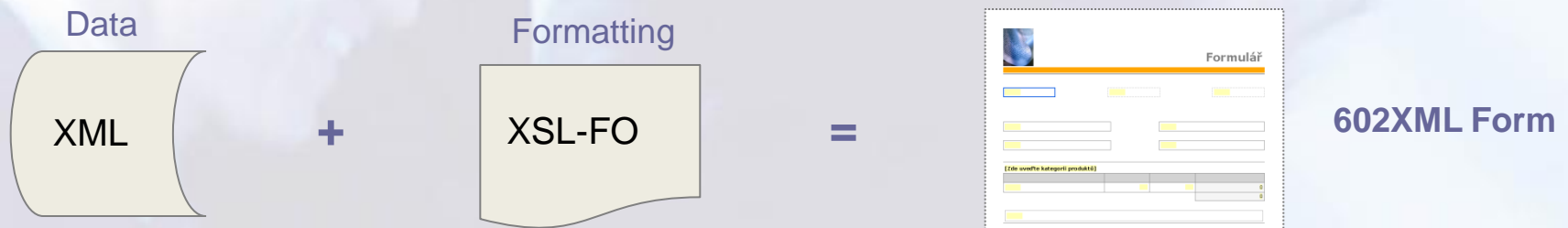
- Xpath language
- XSLT

Database connection

- HTTP/S
- SOAP

Output

- File (.fo, .zfo), XML Data, PDF
- E-mail, Print



eGovernment

- Public administration and municipalities
 - Data collection
 - Document flow
 - **Bridging the communication between citizens and authorities**

CzechPOINT



References – czech point

- Before the project was officially launched citizens had to travel to distant cities to obtain papers
- Hours of travelling
- No sure result
- High costs
- Time consuming, boring, no satisfaction, slow

References – czech point

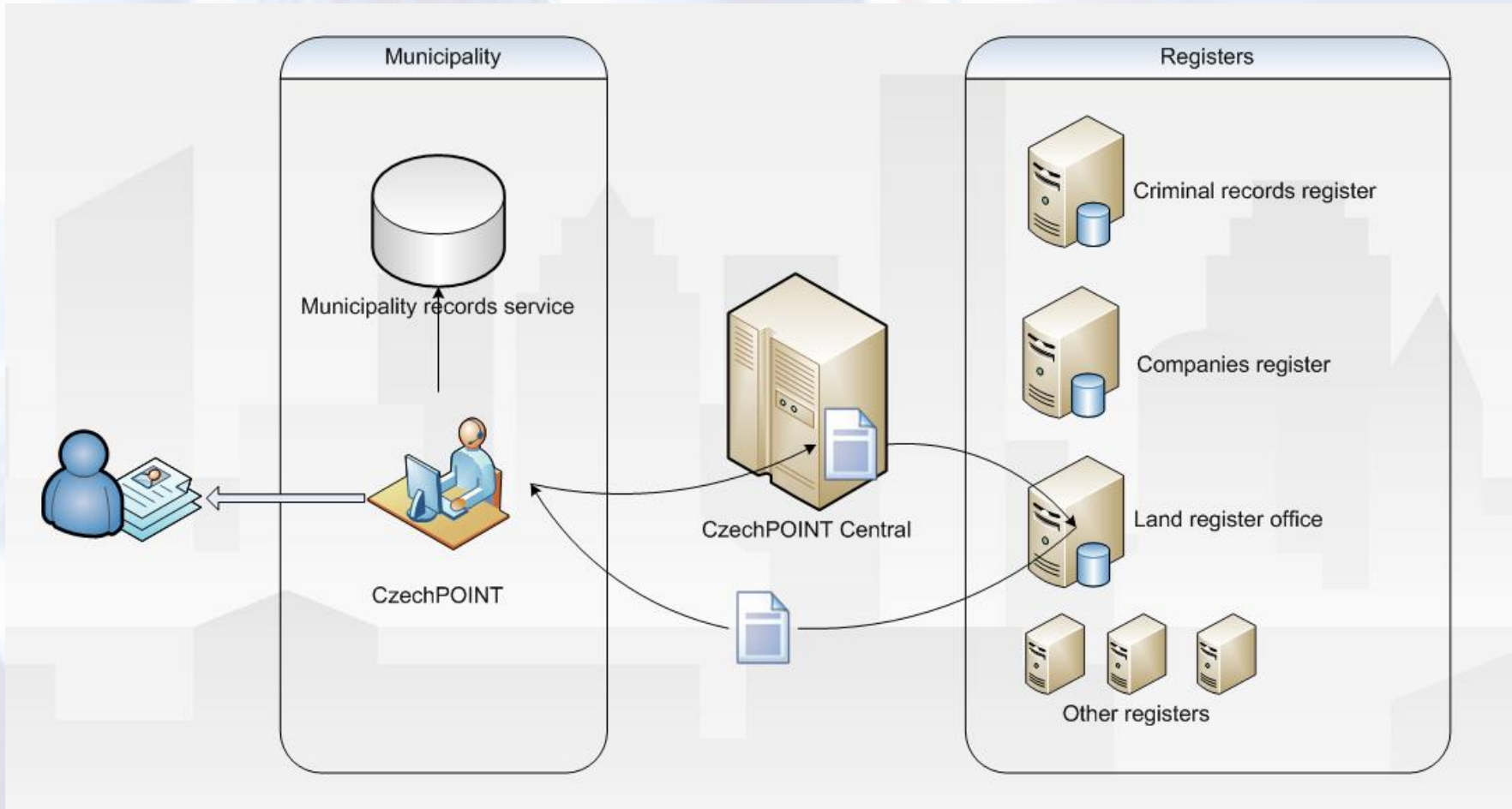
- „Points“ installed in every city and post office in the Czech Republic (3 200 offices)
- No need to go to the authority anymore!
- CzechPOINT are installed at Czech Post offices

References – czech point



- Information system run by Ministry of Interior of the Czech Republic
- Obtain verified output from number of registers (Criminal records register, Land register office, Companies register and others)
- Forms represent unified environment and are connected to document record management system of the municipality and significantly simplify work of the officers.

References – czech point





Počty vydaných výstupů v projektu Czech POINT k 8. 3.2009



Conclusion:

- **Nearly 90% of the public agrees that replacing authorities by CzechPOINTS reduces time of communication with local authorities, sometimes even eradicating it at all**
- **Nation-wide impact on reducing paper work and administrative costs**
- **Positive effect**

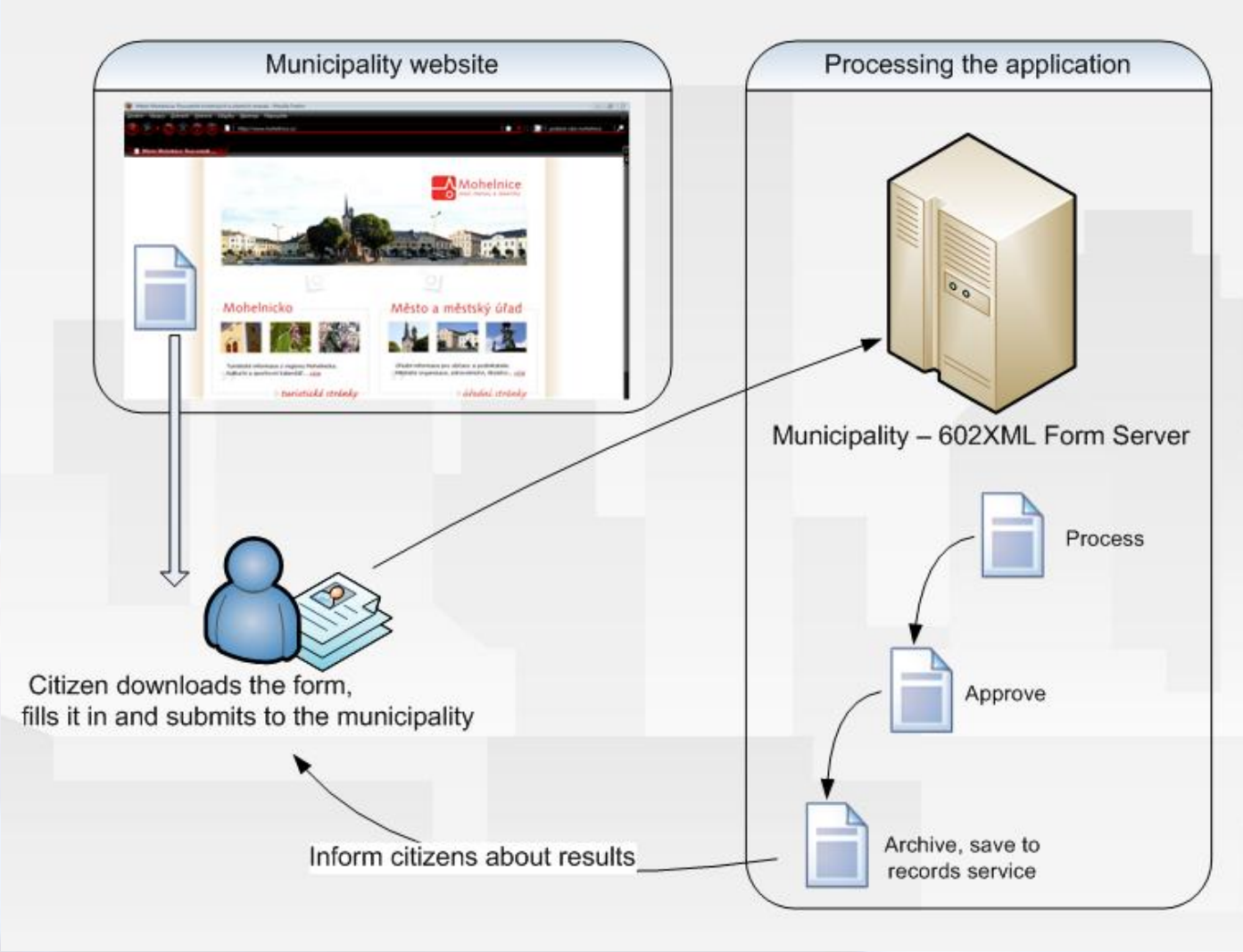


Given Hand

- 
- **Project that aims to ease communication between municipality and citizens**
 - **Aims on simple everyday life agenda which citizens need to solve in their cities)**
 - **Total number of 20 municipalities in Czech Republic**

Every city offers intelligent 602XML Forms for download on their web pages:

- **Traffic Agenda (notification of driving license waste, application for registration book etc.),**
- **Social agenda (application for several kinds of social contributions),**
- **Trades licenses office (application for different business licenses),**
- **Environment (mandatory reports of wood owners, application for sewage license etc.)**



Conclusion:

- **Handy tool for communication between administration and citizens**
- **Quicker processes inside the authority**
- **Ensuring that legal deadlines are met**
- **Reduction of administrative burden on municipality staff and citizens**

About Software602

- **Czech company grounded in 1991**
- **Turnover approximately 130 mil. CZK (€ 4 mil.)**
- **Based in Prague with offices in Bratislava (SK) and Jacksonville (FL)**
- **Employs 60 people**
- **Paperless business processes in**
 - eGovernment
 - Commerce – business processes
 - EU funded – eParticipate, Eureka
- **Looking for partners in the EU**



European seal
of eExcellence
(CeBIT)



Thank you for your attention.

<http://www.youtube.com/watch?v=s9byotHV7NU>

Ing. Petr Pilin
Software602 a.s.
+420 602 140 459
pilin@602.cz
Skype: petr_pilin