

Electronic Exchange of Social Security Information (EESSI): To boost the interoperability on a pan-european level

Dr. Anja Harfner

April 2010

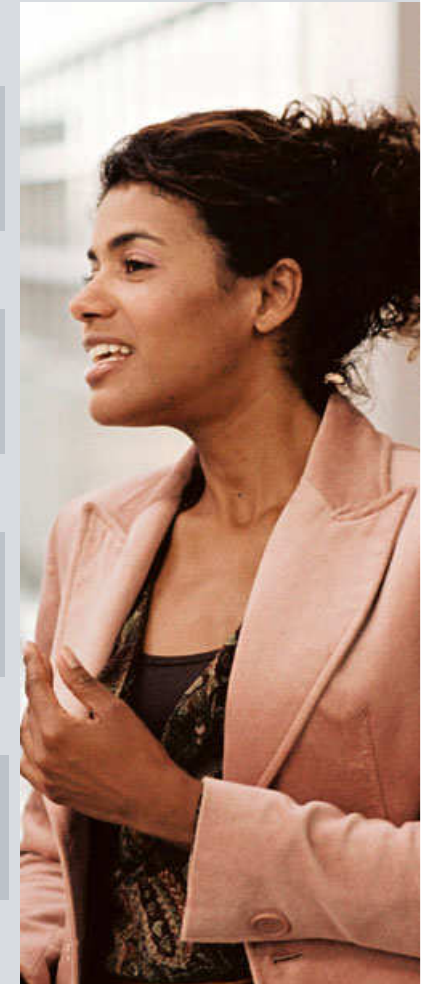
Table of Contents

1 Emergence of EESSI

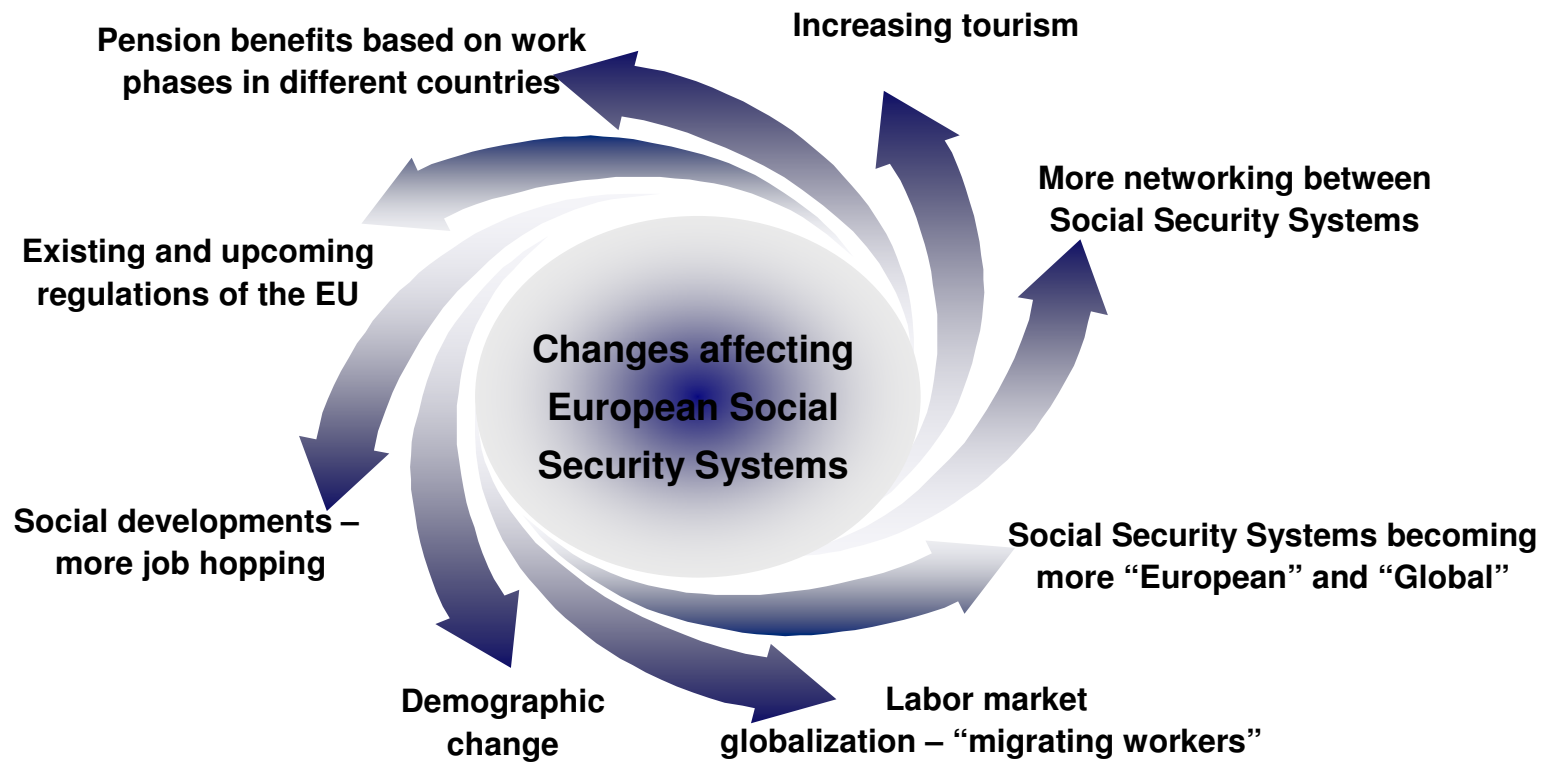
2 Architectural Overview of Main Components

3 National Responsibilities

4 Questions and Answers



The change process increased the pressure on Social Security Organizations in EU to reform



The EU legal framework on the coordination of social security systems



Old Regulations

In the past they are described in Regulation (EEC) 1408/71 and its implementing Regulation (EEC) 574/72

One of the key principles of the EU is the right of free movement of its citizens within the EU boundaries

Upcoming Regulations

The new Regulations (EC) 883/2004 and its implementing Regulation 987/2009 will apply 01.05.2010 (with transition period of 24 month)

EESSI is an essential part of the new Regulations:

- replacing the paper-based E-forms by Structured Electronic Documents (SEDs)
- allowing a secure electronic information exchange
- enhancing administrative cooperation

EESSI in a nutshell

Project scope

- Electronic exchange of social security information concerning Employment, Pension, Healthcare/Healthcare Entitlement, Family Benefits & Postings
- between all social security administrations
- of all 27 EU Member States and 4 associates
- for all ~200 “E forms” in all 22 working languages
- via a central Coordination Node (Brussels) and 1 – 5 National Access Points per country

Timeline

- Duration: 01.12.2008 – 30.11.2010
- Transition Phase: 01.05.2010 – 01.05.2012

Pilot countries

- Austria
- Bulgaria
- Finland
- Germany
- Italy
- Netherlands

Social security institutions have to apply to EU-wide electronic data exchange platform



Current: Complex systems different in each country

- Increasing demand for exchange of information between social security institutions across Europe
- Raising effort for data exchange
- Heterogeneous national IT-infrastructures in the EU
- Redundant data input and processing, since institutions are not fully inter-connected

modernization and speeding up of the information exchanges using an efficient IT solution under a common secure network



Target: IT based exchanges would permit and lead to

- Improved quality and reliability of data
- Increased use of the data
- Efficient verification of the data
- Faster processing
- More flexible and easier interface between different systems
- Improved protection against fraud

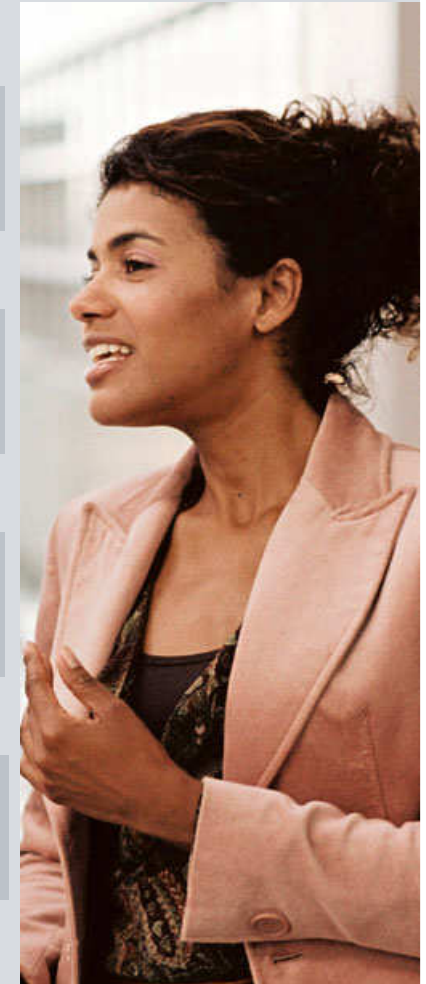
Table of Contents

1 Emergence of EESSI

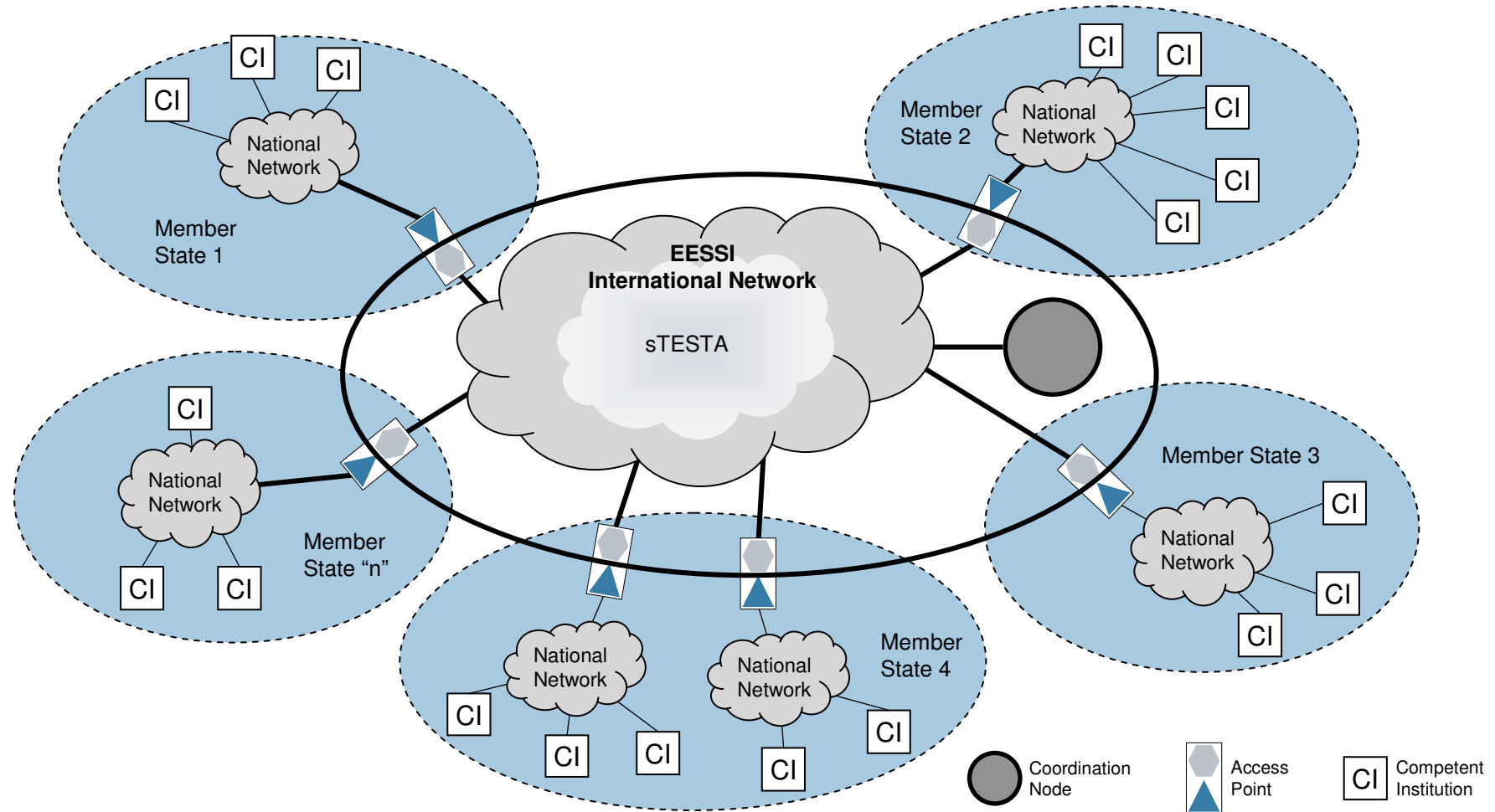
2 Architectural Overview of Main Components

3 National Responsibilities

4 Questions and Answers



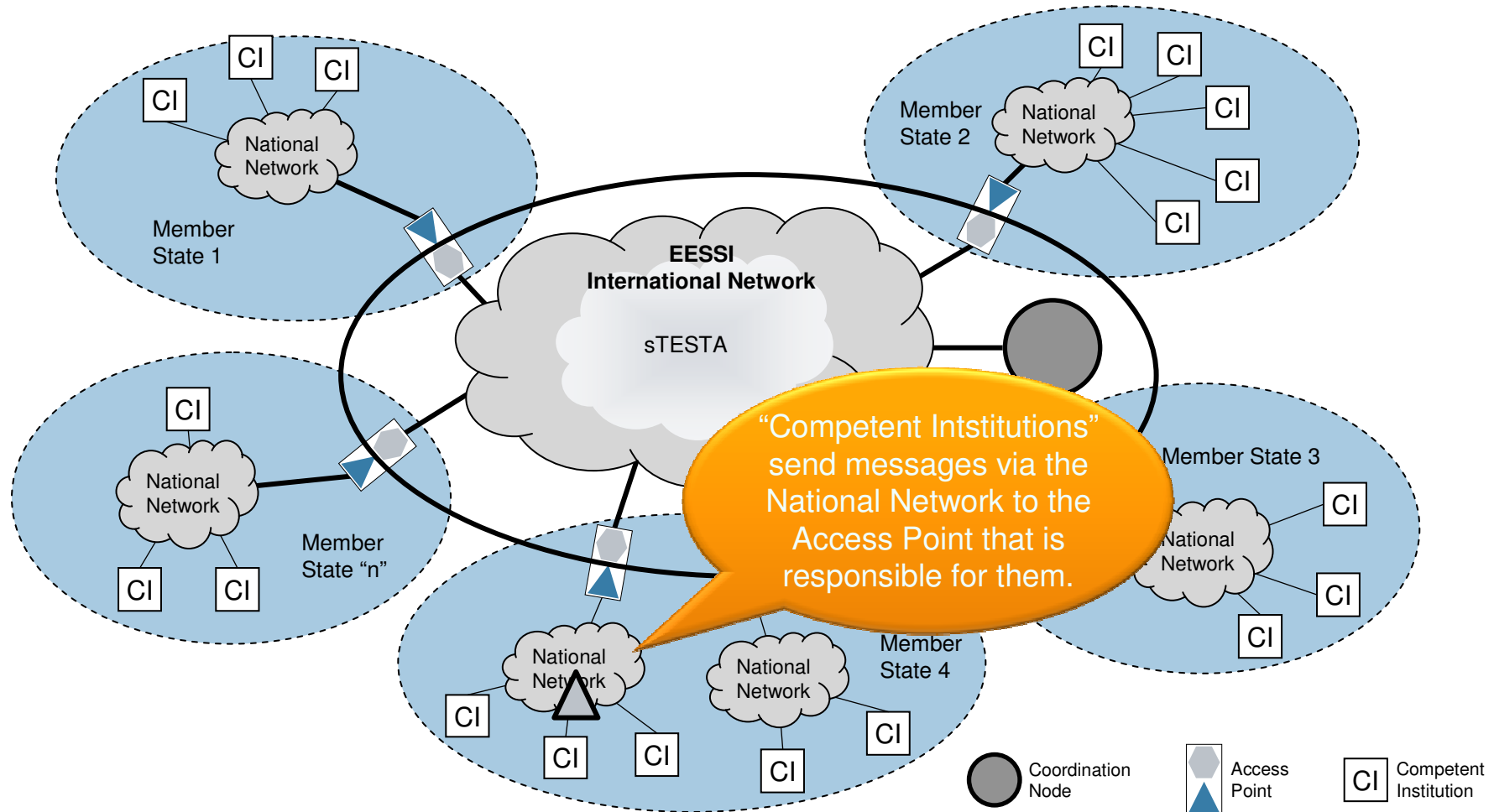
EESSI High-level Architecture



Source: European Commission, DG Employment, Social Affairs and Equal Opportunities

EESSI Message exchanges

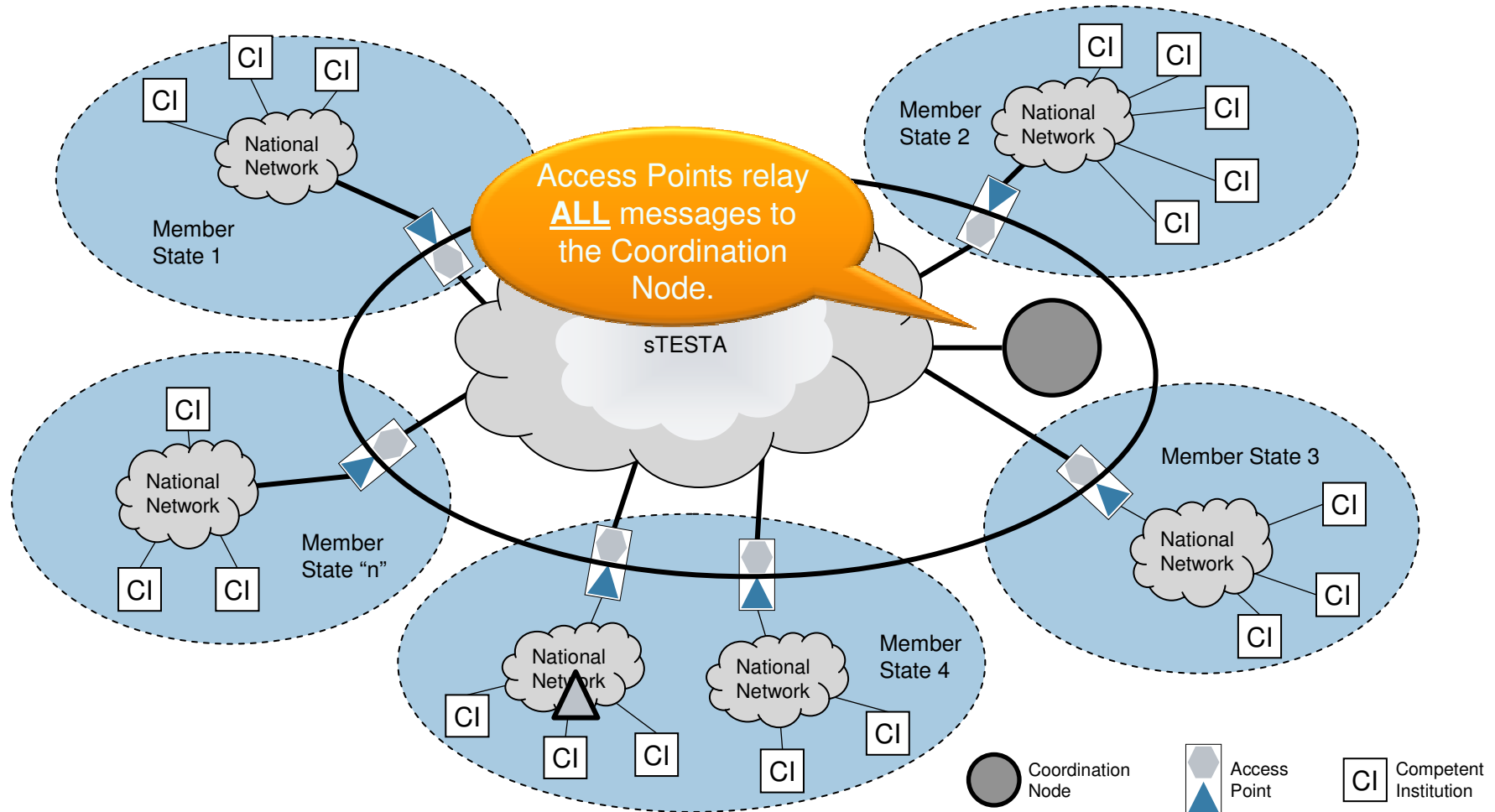
Sending messages via Access Points



Source: European Commission, DG Employment, Social Affairs and Equal Opportunities

EESSI Message exchanges

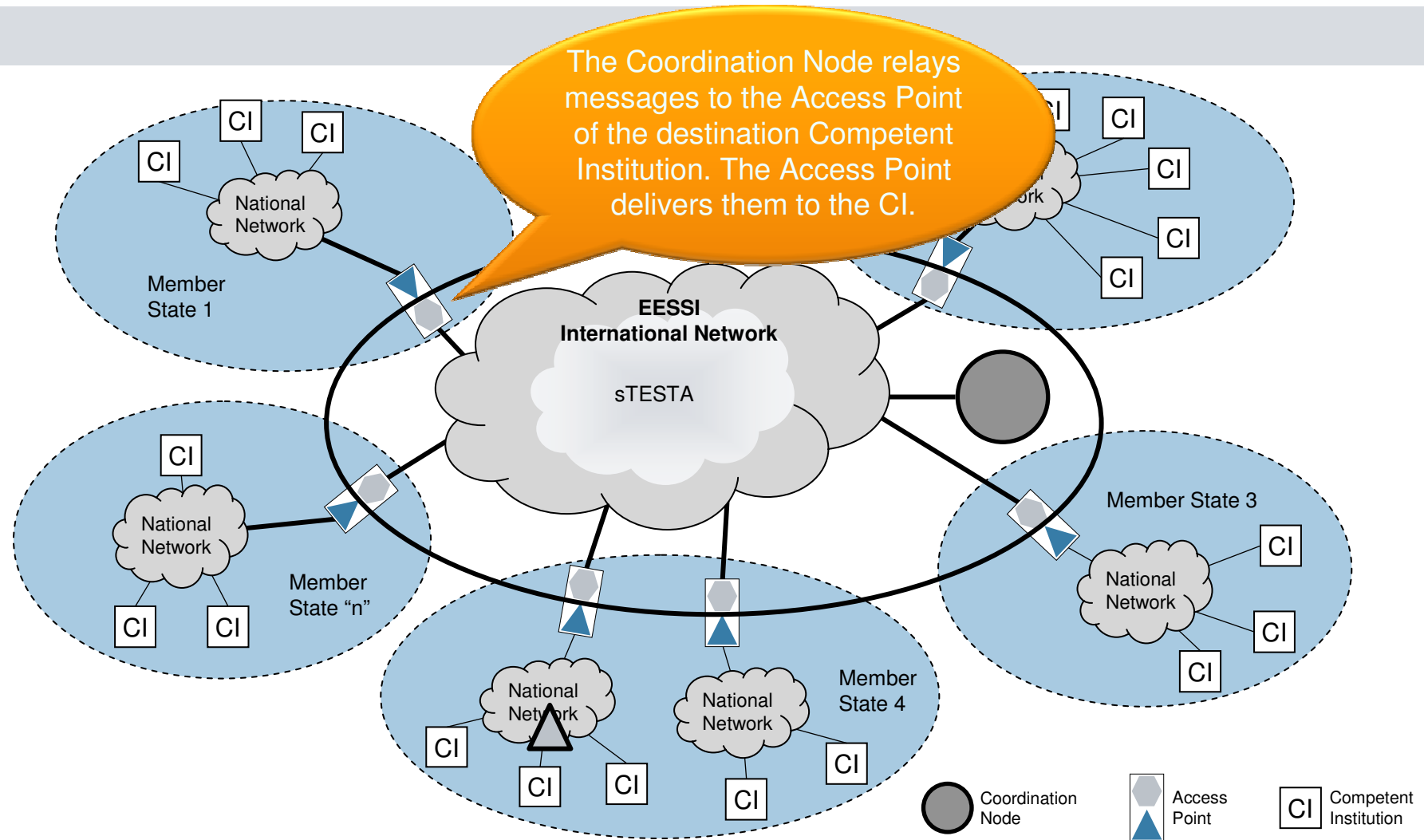
Relaying messages via the CN



Source: European Commission, DG Employment, Social Affairs and Equal Opportunities

EESSI Message exchanges

Delivery via appropriate Access Point



Source: European Commission, DG Employment, Social Affairs and Equal Opportunities

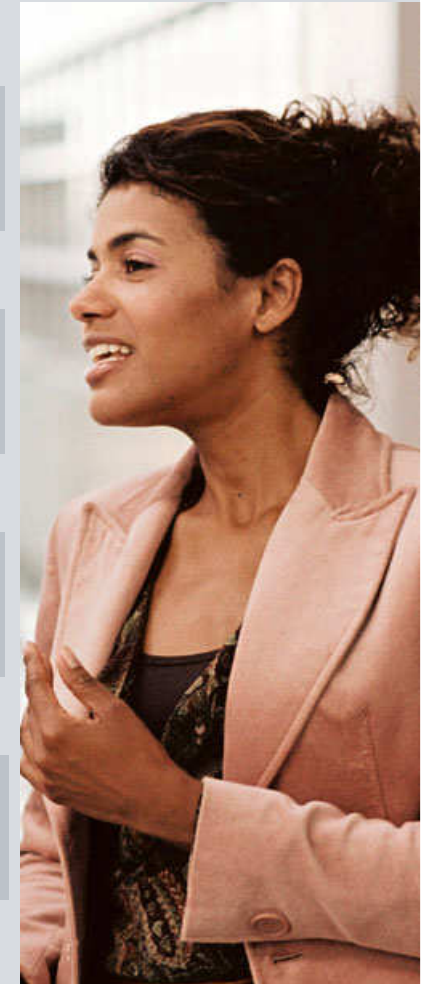
Table of Contents

1 Emergence of EESSI

2 Architectural Overview of Main Components

3 National Responsibilities

4 Questions and Answers

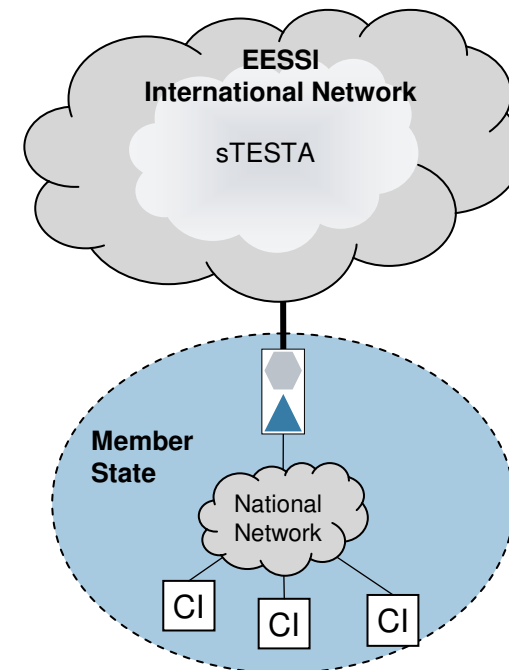


Member States need to be prepared for EESSI



Getting ready for EESSI.....

- How will the national implementation of EESSI will be coordinated in your country? (ministry, working group, budget)
- How will you implement the National Access Points in your country? (number, location, operator of access points, HW/SW)
- What about the usability of your National Networks? (all CIs connected, security requirements, ...)
- How will you efficiently connect EESSI with your expert systems within the competent institutions? (integration, usage of WEBIC, XML, SOA, processes)
- Upgrades or legacy system adjustments to support the required business functionality necessary?
- What is your timeline to implement EESSI?
- Who is holding the budget (responsible for tenders)?



Source: European Commission

Competent Institutions need to be prepared for EESSI



Competent Institutions have to focus on:



The implementation of EESSI affects more or less all domains of a Competent Institution

Table of Contents

1 Emergence of EESSI

2 Architectural Overview of Main Components

3 National Responsibilities

4 Questions and Answers

